
PINECREST

2020

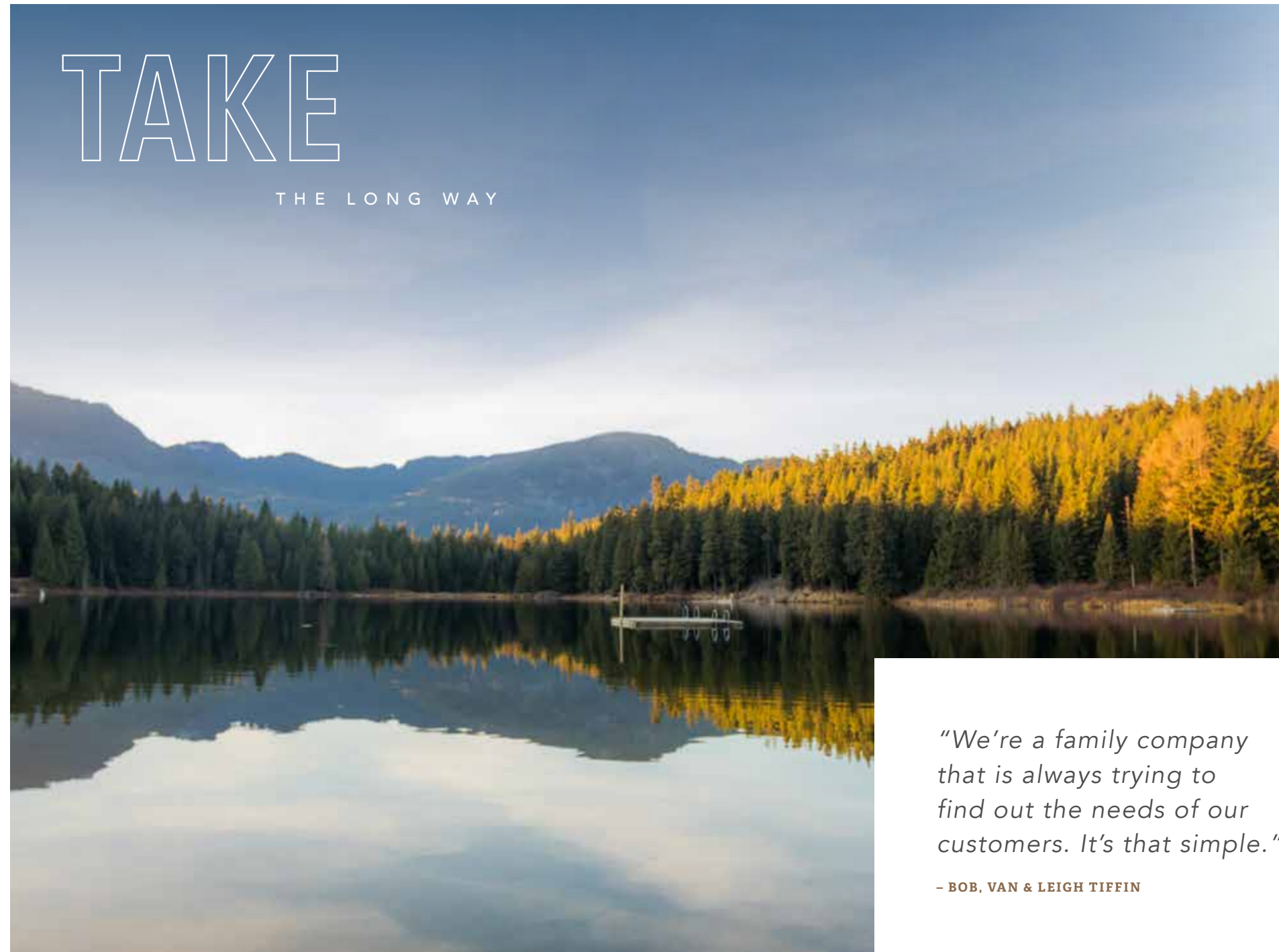


VANLEIGH

A DIVISION OF TIFFIN

TAKE

THE LONG WAY



*"We're a family company
that is always trying to
find out the needs of our
customers. It's that simple."*

— BOB, VAN & LEIGH TIFFIN



2020 PINECREST

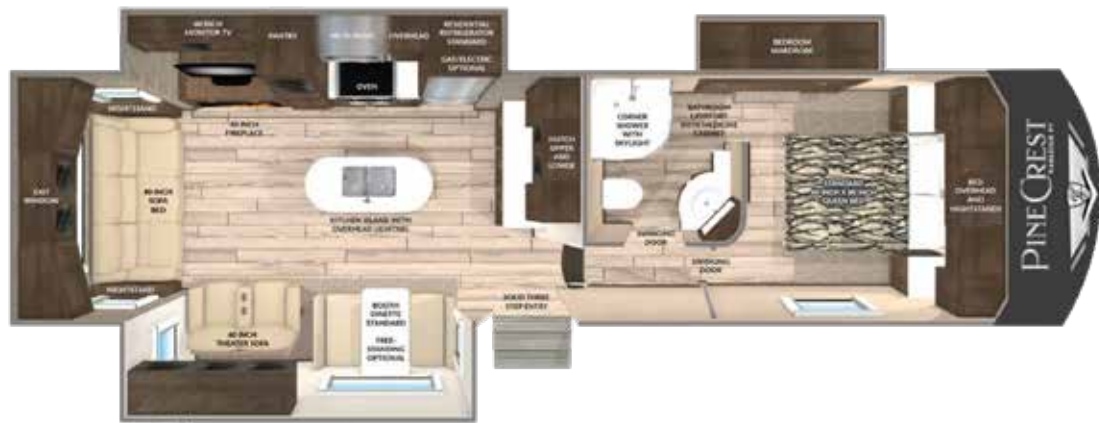


BUILT AROUND YOU®

We wanted to build a fifth-wheel that could accommodate both your lifestyle and your budget. The Pinecrest does all that, while still allowing you to travel in luxury and style. Backed by Vanleigh's continued commitment to customer service and innovation, the Pinecrest will quickly transform you from a first-time buyer to road-tripping across the nation.



305RLP
PINECREST REAR LIVING



SPECIFICATIONS

GVWR 12,200	Fresh Water Cap. 55 gal
Dry Weight 9,995*	Grey Water Cap. 90 gal
Cargo Carrying 2,205	Black Water Cap. 45 gal
Width 96"	Water Heater 6 gal
Height 12' 2"	Furnace 35K BTU
Length 32' 6" **	LP Cap. 60 lbs
* unloaded and based off of an average	Hitch Weight 1,795
** from pinbox to end of unit	

Specially crafted to be a unit that will accommodate both your lifestyle and your budget, the 305RLP stands above the rest.

Prepare to relax and unwind after a long day of sightseeing in the 305RLP. You'll feel right at home.



Shown in Mocha

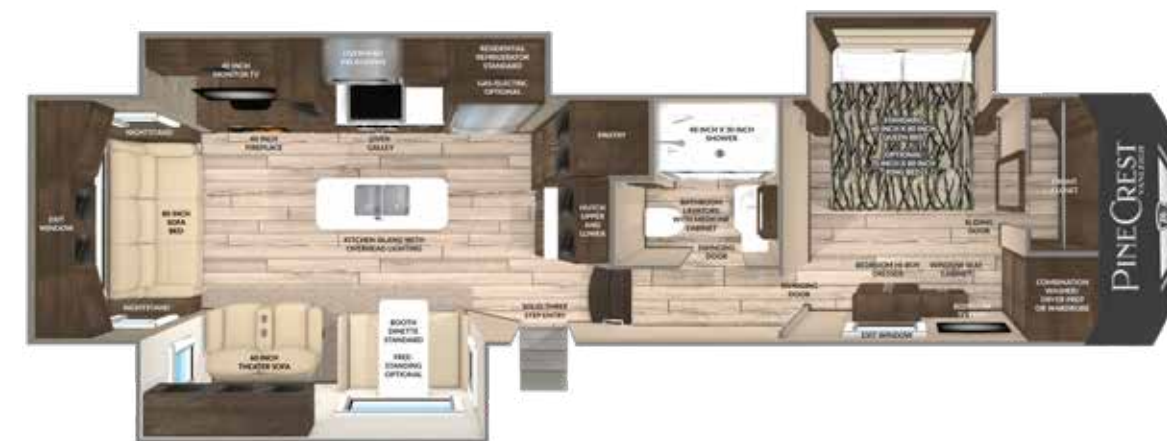


Shown with Optional Freestanding Dinette Table



335RLP

PINECREST REAR LIVING



SPECIFICATIONS

GVWR 14,000

Dry Weight 10,850*

Cargo Carrying 3,120

Width 96"

Height 12' 6"

Length 34' 11" **

* unloaded and based off of an average

** from pinbox to end of unit

Fresh Water Cap. 55 gal

Grey Water Cap. 90 gal

Black Water Cap. 45 gal

Water Heater 6 gal

Furnace 35K BTU

LP Cap. 60 lbs

Hitch Weight 2,150

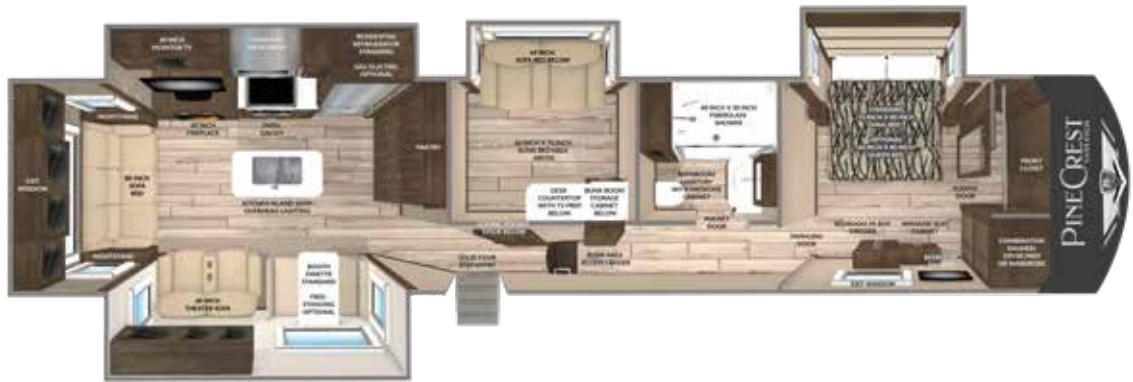
Turn camping excursions into fabulous getaways with the 335RLP. There's room for everyone and everything and you know you can sleep 6 comfortably.

With elegant and modern amenities you come to expect from Vanleigh, the 335RLP will keep you comfortable in style.



Shown in White Linen

392MBP
PINECREST MID-BUNK



SPECIFICATIONS

GVWR 14,995
Dry Weight 12,490
Cargo Carrying 2,505
Width 96"
Height 12' 6"
Length 41' 4"
Fresh Water Cap. 70 gal

Grey Water Cap. 90 gal
Black Water Cap. 50 gal
Water Heater 6 gal
Furnace 35K BTU
LP Cap. 60 lbs
Hitch Weight 2,400

The new 392MBP is one of our largest and most innovative floorplans yet. With a King bed in the Master Suite, a Mid-bunk bed and fold-out sleeper in the Mid-Cabin living room, and a fold-out sleeper and dining table fold-down sleeper in the main galley, this unit can sleep 10 comfortably.

It's perfect for new families that are looking for room to grow or just enjoy bringing friends along for the trip.



Shown in Mocha



- T60 FIBERGLASS
- TPO ROOF VS RUBBER
- REAL WOOD DOORS HANDCRAFTED IN HOUSE
- REAL WOOD FASCIA HEADERS HANDCRAFTED IN HOUSE
- REAL WOOD FASCIA LEGS HANDCRAFTED IN HOUSE
- SOLID WOOD DRAWERS AND DRAWER FRONTS
- SOLID SURFACE ISLAND AND GALLEY COUNTERTOPS
- MOTORHOME DECOR
- RESIDENTIAL FRANKLIN FURNITURE
- STEEL BALL BEARING DRAWER GLIDES
- FURRIION OVEN AND COOKTOP
- DUCTED A/C VS ROUTED STYROFOAM
- WINDOW IN GALLEY
- RIGID CONGOLEUM FLOORING
- RESIDENTIAL FRIDGE W/1000-WATT PURE SINE WAVE INVERTER
- ENCLOSED WETBAY W/CONNECTIONS VS EXTERIOR CONNECTIONS
- 4PT ELECTRIC AUTO LEVELING SYSTEM VS ELECTRIC SCISSOR JACKS
- COLEMAN MACH 3 A/C VS DOMETIC



FOR MORE INFORMATION GO TO:
vanleighrv.com

WOOD FINISH/STAINS

STANDARD
SOLID WOOD
CABINETRY



Mocha



White Linen

Some interior furnishings not included. Some photos shown in literature have optional equipment. All options may not be available in every model. Because of progressive improvements, specifications, standard and optional equipment are subject to change without notice or obligation. For a complete and up-to-date list of available options and specifications, as well as Vanleigh's full line of RVs, visit vanleighrv.com.





ALL WARRANTIES ARE NOT CREATED EQUAL.



See why ours stand the test. At Vanleigh, building a quality coach is our primary focus. Our warranty reflects our confidence in the construction of our unit. From the beginning phases of production we have pressurized water on our units. Throughout our production process we run systems checks on every component in the RV. Once your RV is completed it is taken outside to our onsite campground where it is hooked up to full services and put through an additional PDI inspection. We are proud to offer this accountability to our customers along with the following basic limited warranties:

3 YEAR CONSTRUCTION WARRANTY:

The structure of the welded frame of the RV is warranted for 3 years (36 months)

1 YEAR BASE LIMITED WARRANTY:

Your coach has a limited warranty against defects in materials and workmanship for 12 months of ownership

ONGOING OWNER SUPPORT

Vanleigh is proud to offer exceptional customer support. E-mail us at retailservice@vanleighrv.com or call us at **662.331.2933**. We build our units with tested and proven components. Many of these components carry their own respective warranties. Please see owner's manual for the warranties of components.

BUILT AROUND YOU

We've always prided ourselves in putting our owners first. To build the best product and service it, with the same quality and care. It's at the core of who we are. We appreciate your consideration of Vanleigh.

— Bob, Van and Leigh Tiffin



VANLEIGH

A DIVISION OF TIFFIN

26 Industrial Drive | Burnsville, MS 38833
Phone 662-612-4040 | Fax 662-655-0913
www.vanleighrv.com

YOUR LOCAL VANLEIGH RV DEALER:

**LaMESA REC
VAN**

LaMesaRV.com
800-496-8778